



Serving the Windows Embedded Community

Embedded101 Blog User Guide

Using Windows Live Write 2011 To Upload Blog Entry



Samuel Phung
Windows Embedded MVP
<http://www.embedded101.com>



Screen captured with Snagit

Table of Contents

Introduction	3
Windows Live Writer 2011 Configuration	4
Windows Live Writer – New Configuration	4
Windows Live Writer – Add an Account.....	7
Create Blog Entry using Windows Live Writer 2011	11
Create New Blog Entry.....	11
Categorize the Blog Entry	13
Tag Cloud	13
Set Post Date to Post the Blog Entry	14
Upload Blog Entry to Embedded101 Site	15
Blog Administration	17
Blog Settings	18
Manage Blog Entries.....	18
Settings for Comments	18
Comments Moderation	19

Updated: May 23rd, 2012

Introduction

The Embedded101 online community website is created to provide a place for Windows Embedded enthusiasts to share knowledge and provide technical information resources to help developer new to Windows Embedded to learn and engage in developing Windows Embedded application.

The website is setup using DotNetNuke, an open-source ASP.NET content management system (CMS), on a Windows 2008 hosting platform with SQL Server 2008 database on the backend.

To establish a sustainable community, the website is designed and configured to minimize ongoing maintenance and simplify the effort needed for community members to contribute and share contents.

To provide blogging functionality, the SunBlogNuke module, an add-on to DotNetNuke, is used on the Embedded101 site. The SunBlogNuke module has proven to be a stable and feature rich blog engine for the DotNetNuke platform. The SunBlogNuke module includes all of the common blog engine features and some additional features, such as the following:

- Blog owner can assign other registered users to contribute contents to his/her blog. This feature can be used to setup a team blog with entries from multiple users.
- Comment for each individual blog entry can be turn on or off by the blog owner, with different level of moderation.
- Blog owner can enable CAPTCHA to prevent machine generated spam to the comment section of each blog entry.
- Using Windows Live Writer to upload new blog entry.
- Using Windows Live Writer to update/modify existing entry.
- Enter new blog entry from a web browser.
- Update/modify existing entry from a web browser.

Windows Live Writer (WLW) provides an easy and convenience environment to compose blog entry. In addition to be able to use different font style, you can insert graphic (BMP, GIF, JPEG, PNG & etc.) to each entry. WLW helps simplify the effort to needed to add entries to your Embedded101 Blog.

Using WLW, it's also possible for you to write a blog entry and configure the entry to be posted at a later date.

This guide is put together to provide information, in step-by-step format, showing how to configure Windows Live Writer 2011 to establish connectivity and upload entry to an Embedded101 blog.

Windows Live Writer 2011 Configuration

Windows Live Writer is available from Microsoft for free, and usually install to the computer as part of the Windows Live Messenger installation. If you have a Windows Live ID and is using Windows Live Messenger, WLW is likely already installed on your computer.

WLW is available for download from Microsoft at the following URL:

<http://explore.live.com/windows-live-writer>

WLW works pretty much like any other document editor, with WYSIWYG feature, able to view and edit the content in HTML source. Once configured, writing and sending blog entries to the Embedded101 blog is simple. You simply create a document, write the contents, format and insert graphic as needed and click a button to upload the entry to a designated Embedded101 blog.

In this section, we will go through the steps to configure Windows Live Writer.

Windows Live Writer – New Configuration

In this section, we will go through the steps to configure a newly installed Windows Live Writer. To configure Windows Live Writer to connect to your Embedded101 blog, you need the following information:

- Your username and password to login to the Embedded101 website.
- URL to your blog, which should be similar to the following:
<http://www.embedded101.com/Blogs/<blog name>.aspx>

Work through the following steps to configure WLW:

1. Launch WLW from the Windows startup menu, from the “Windows Live” program group. When WLW is launched for the first time, the following WLW configuration wizard is launched, as shown in Figure-01.

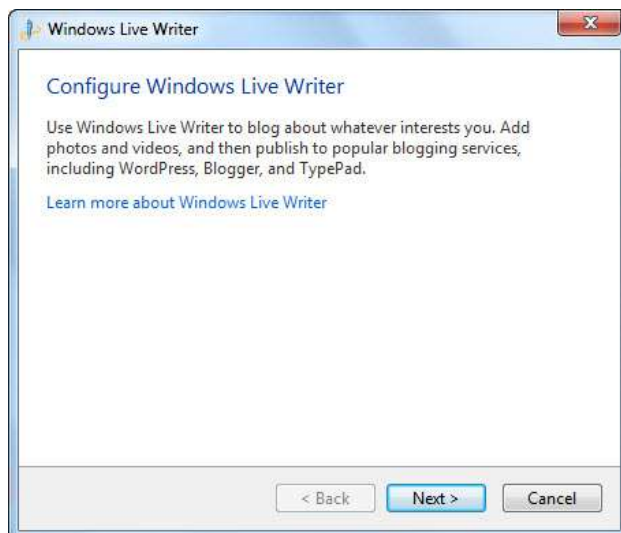


Figure-01

Note: If you already configured WLW for other purpose, skip to the next section to configure WLW with your existing configuration.

2. Click on Next to bring up the blog service selection screen, as shown in Figure-02.

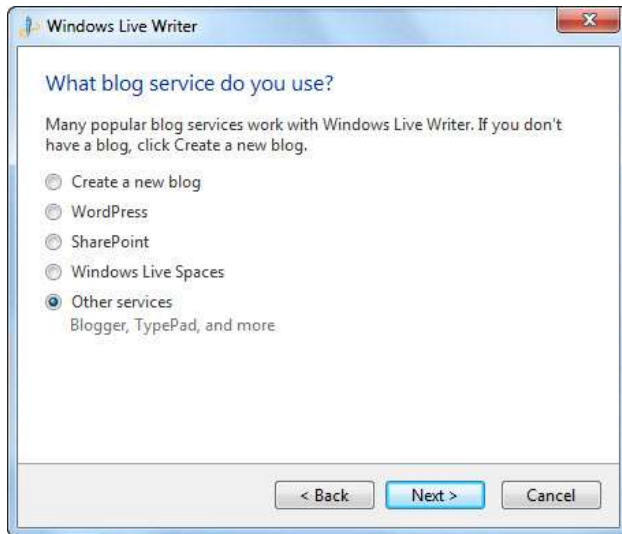


Figure-02

3. Select the Other services option and click on Next to bring up the Add a blog account screen, as shown in Figure-03.



Figure-03

4. Enter the URL to your Embedded101 blog. Enter username and password to log into the Embedded101 website. Check the Remember my password checkbox and click on Next to continue.
5. At this point, the WLW configuration wizard is attempting to connect to the Embedded101 blog and display activities similar to Figure-04.

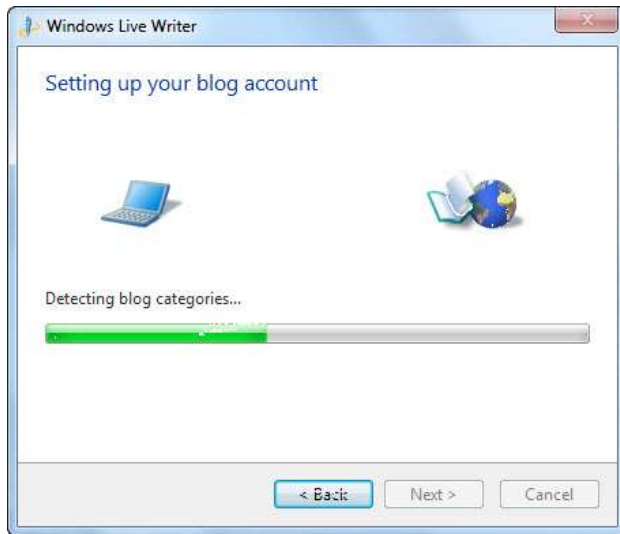


Figure-04

6. As the WLW wizard establishes connectivity to the blog, it brings up the following screen and asks for permission to download the blog theme, as shown in Figure-05.

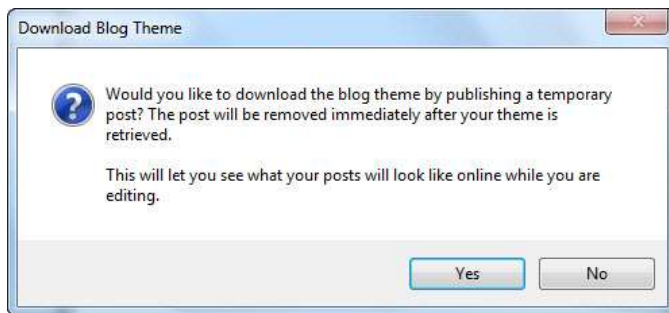


Figure-05

7. Click on Yes to allow the wizard to download blog theme. The wizard continues and brings up the final step, as shown in Figure-06.

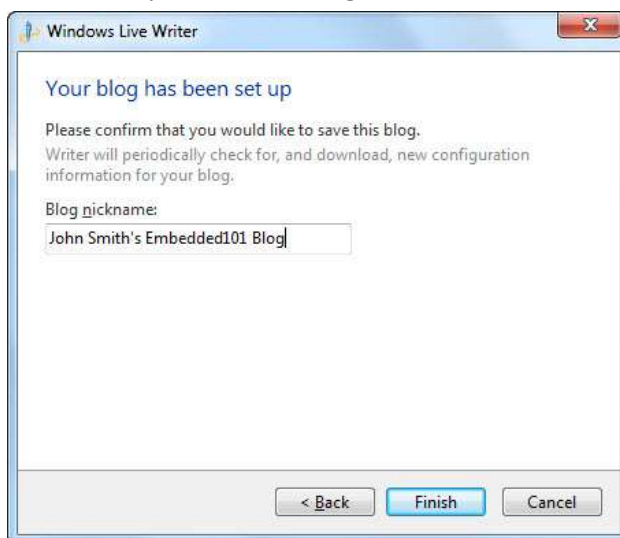


Figure-06

8. Enter a blog nickname to identify the blog and click on Finish to complete the last WLW wizard step.

The WLW account connecting to your Embedded101 is configured. You can select the WLW account you just created, write a new blog entry from WLW and click on the Publish to upload the entry to your blog.

Windows Live Writer – Add an Account

If you are already using WLW, this section provides information showing the steps to add a new WLW account to connect to your Embedded101 blog.

To configure WLW to connect to your Embedded101 blog, you need the following information:

- Username and password to login to the Embedded101 website.
- URL to your blog, which should be similar to the following:
<http://www.embedded101.com/Blogs/<blog name>.aspx>

Work through the following steps to configure WLW:

1. Launch WLW from the Windows startup menu.
2. From the WLW menu, select the menu icon and click on Options (as shown in Figure-07), to bring up the Options screen, as shown in Figure-08.

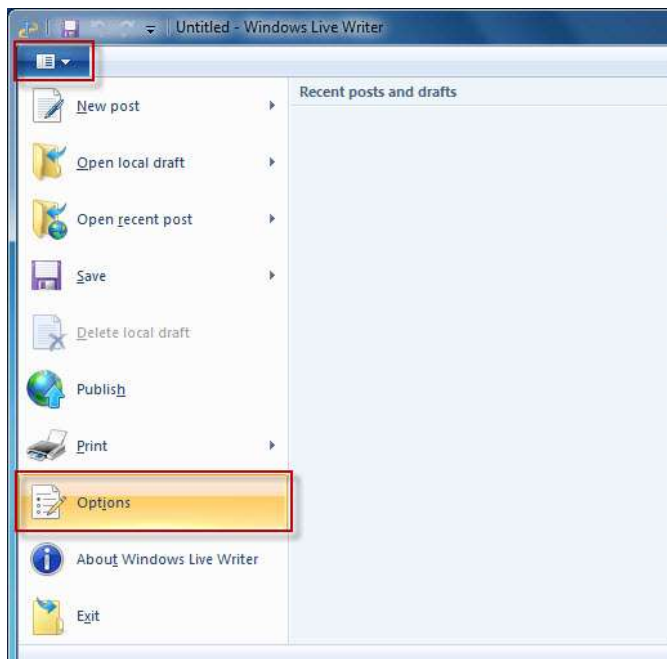


Figure-07



Figure-08

3. From the Options screen's left pane, select Accounts. On the right, click on Add to bring up the new account configuration wizard, as shown in Figure-09.

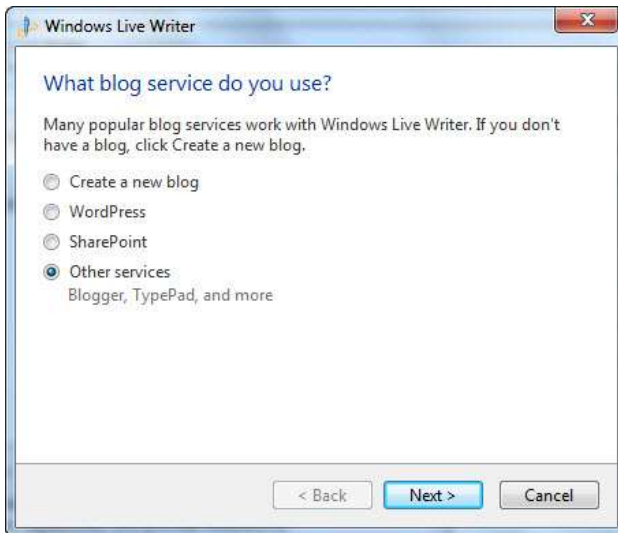


Figure-09

4. Select the Other services option and click on Next to bring up the Add a blog account screen, as shown in Figure-10.

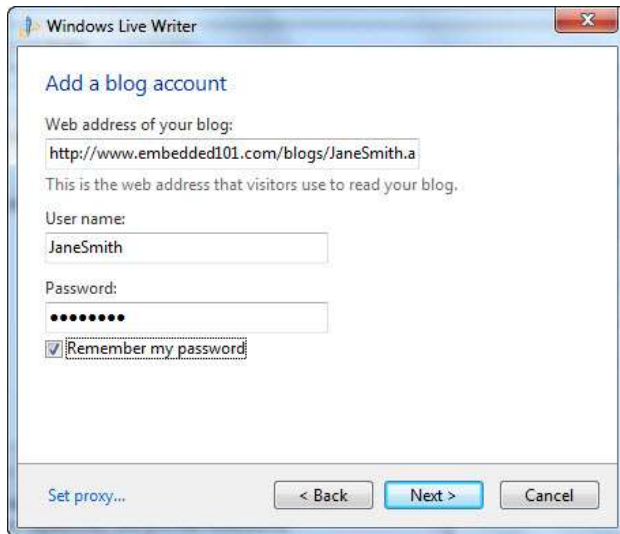


Figure-10

5. Enter the URL to your Embedded101 blog. Enter username and password to log into the Embedded101 website. Check the Remember my password checkbox and click on Next to continue.
9. At this point, the WLW configuration wizard is attempting to connect to the Embedded101 blog and display activities similar to Figure-11

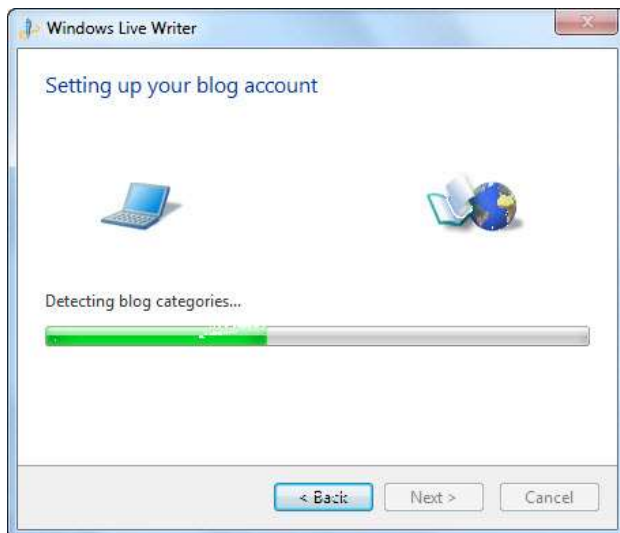


Figure-11

10. As the WLW wizard establishes connectivity to the blog, it brings up the following screen and asks for permission to download the blog theme, as shown in Figure-12.

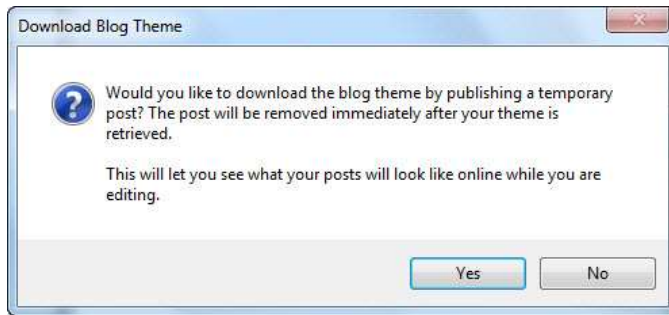


Figure-12

6. Click on Yes to allow the wizard to download blog theme. The wizard continues and brings up the final step, as shown in Figure-13.

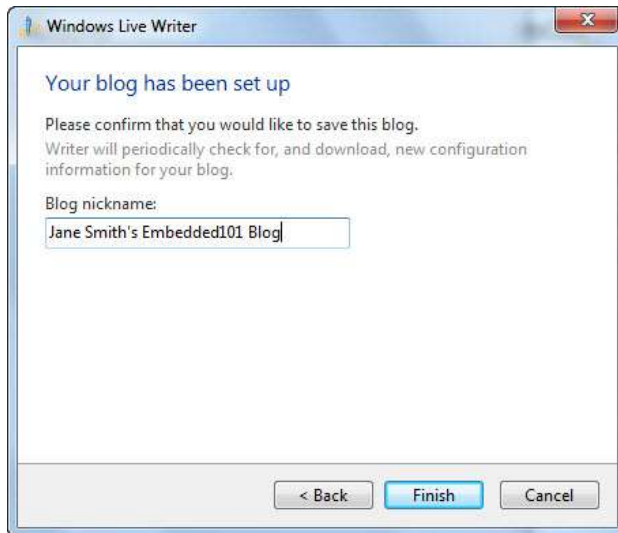


Figure-13

11. Enter a blog nickname to identify the blog and click on Finish to complete the last WLW wizard step.

The WLW account connecting to your Embedded101 is configured. You can select the WLW account you just created, write a new blog entry from WLW and click on the Publish to upload the entry to your blog.

Create Blog Entry using Windows Live Writer 2011

WLW provides an easy to use WYSIWYG environment to create content with graphic, format the content with different font, color and layout. When finish, you can simply click a button to upload the formatted content to your Embedded101 blog.

In addition to the WYSIWYG content creation environment, Windows Live Writer provides the facility to preview content as it appears online and facility to view the content in HTML source format.

After the content is uploaded to your blog, you can easily add update or modify existing content.

Create New Blog Entry

Work through the following steps to create a blog entry using WLW:

1. From the computer's startup menu, select Windows Live and click on Windows Live Writer to launch WLW.
2. If you have multiple accounts setup for WLW, select the appropriate account. Enter a title and short description for the entry, as shown in Figure-14.

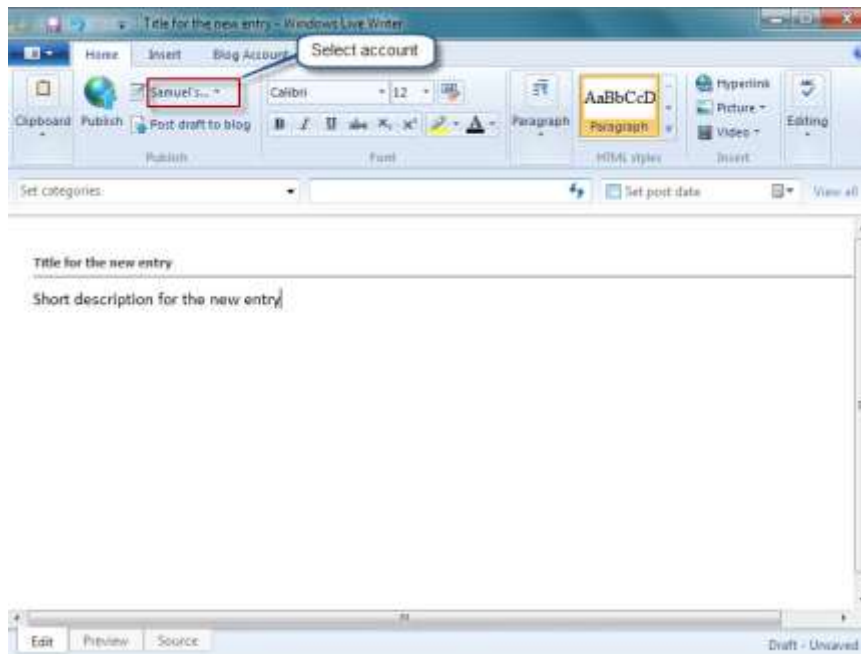


Figure-14

3. From the WLW menu, select Insert and click on Split post to add an HTML tag to separate the short description from the main content of the blog entry.
4. After the split post tag is inserted, you can see a gray dot line below the short description section, ended with a small gray rectangle with the word "more". Start to write your blog entry after the Split post tag, as shown in Figure-15.

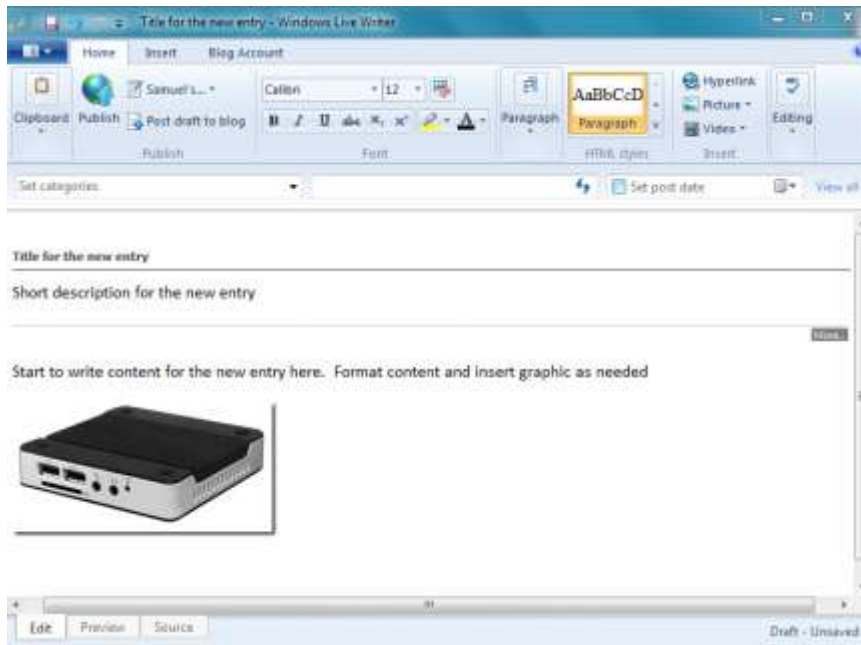


Figure-15

While you can use the copy and paste function with text content, it does not work with graphic. To insert graphic image to the entry, you must have access to the actual graphic file, store locally on your computer or a known URL.

You must use the Insert Picture option from the WLW menu, as shown in Figure-16.

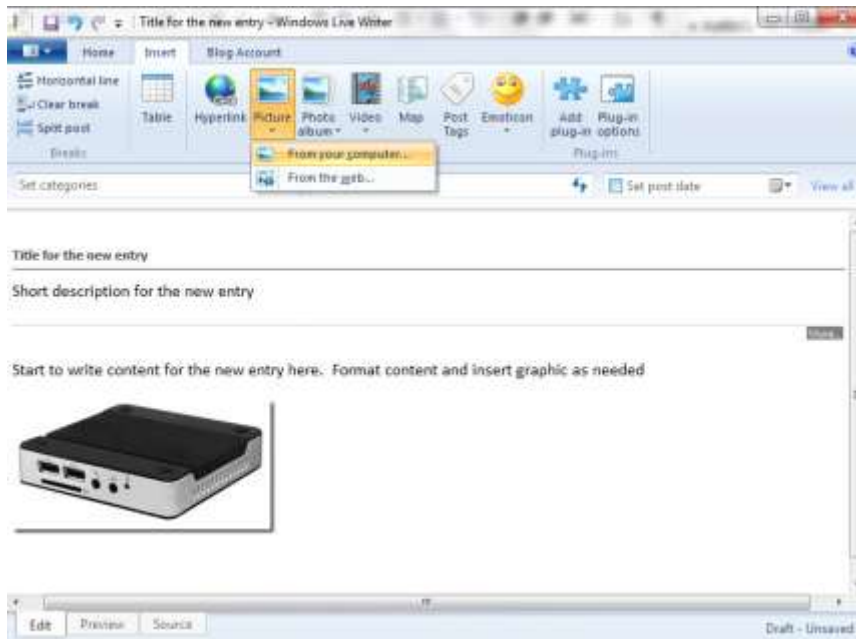


Figure-16

From the above screen, you can enter the title for the blog entry, write the contents and click on the “Publish” button to post the entry to your blog.

Categorize the Blog Entry

In addition to writing the blog entry, you can associate the entry with one or more categories prior to posting the entry.

In the earlier step, when setting up the Windows Live Writer account to access your blog, if you follow the instruction and selected “Yes” to allow WLW to download the theme and template from the Embedded101 site, you can associate each blog entry with one or more categories for your blog.

To associate a blog entry to one or more categories, click on “Set categories” to bring up the category selection list, as shown in Figure-17.

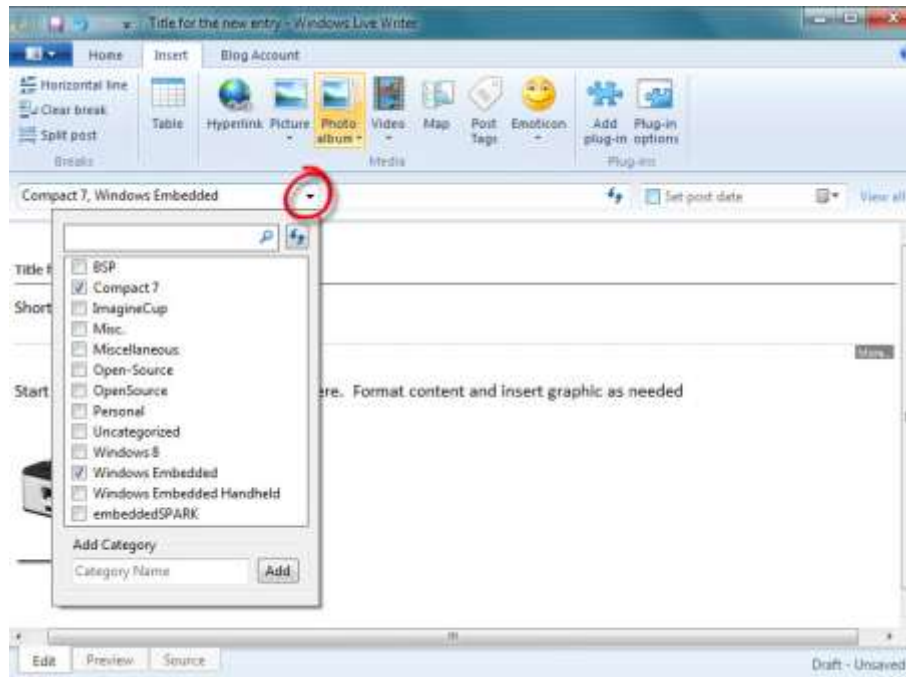


Figure-17

- Select one or more categories for the blog entry.
- You can enter a new category in the Add Category text box and click on Add.

Tag Cloud

In addition to associating each blog entry with different categories, you can also associate the entry with different tag, part of the Tag Cloud feature for the Embedded101 blog, as shown in Figure-18.

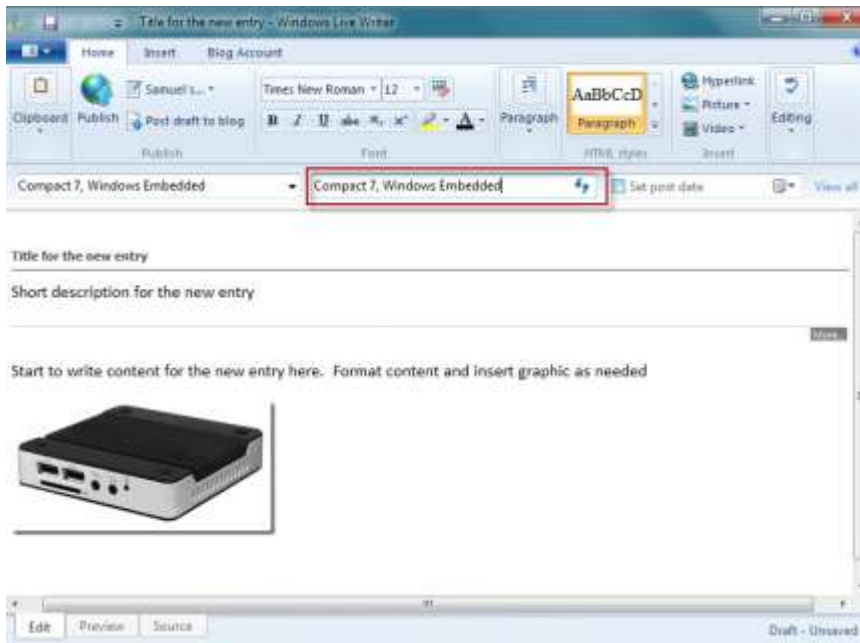


Figure-18

Note: Tag Cloud provides similar function as category, which enable website visitor to click on one of the Tag to bring up blog entry associated with the selected Tag.

Set Post Date to Post the Blog Entry

The Embedded101 blog includes a feature which enables you to write a blog entry now and configure the system to post the entry at a later date, as shown in Figure-19.

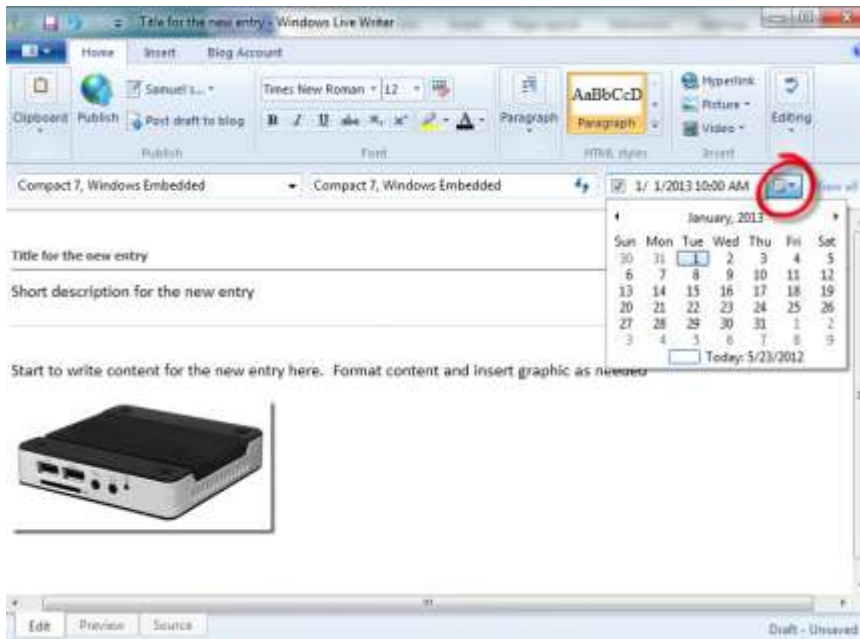


Figure-19

Upload Blog Entry to Embedded101 Site

If your Windows Live Writer is setup to post to multiple blog accounts, be sure to select the appropriate account, as shown in Figure-20.

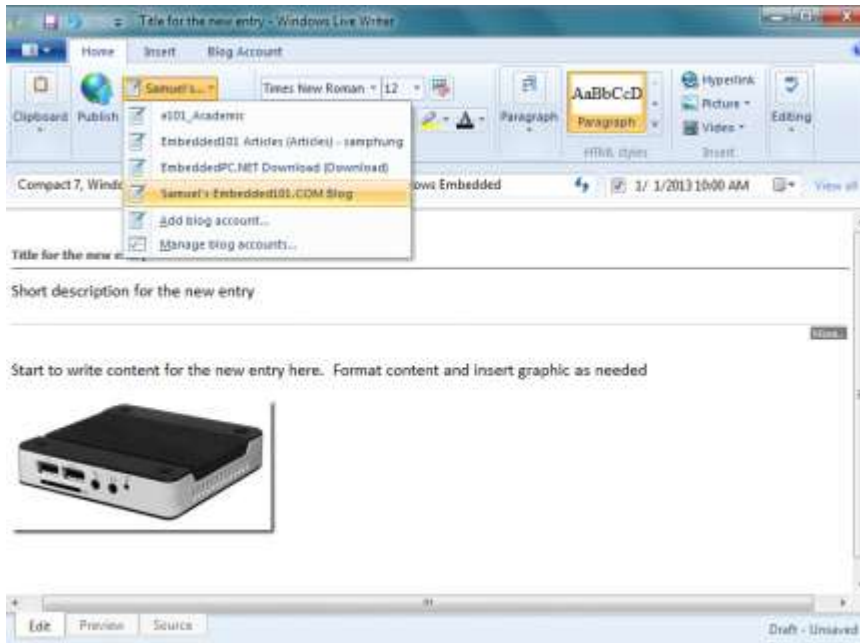


Figure-20

To upload the blog entry, from the WLW menu, click on the **“Publish”** button, as shown in Figure-21.

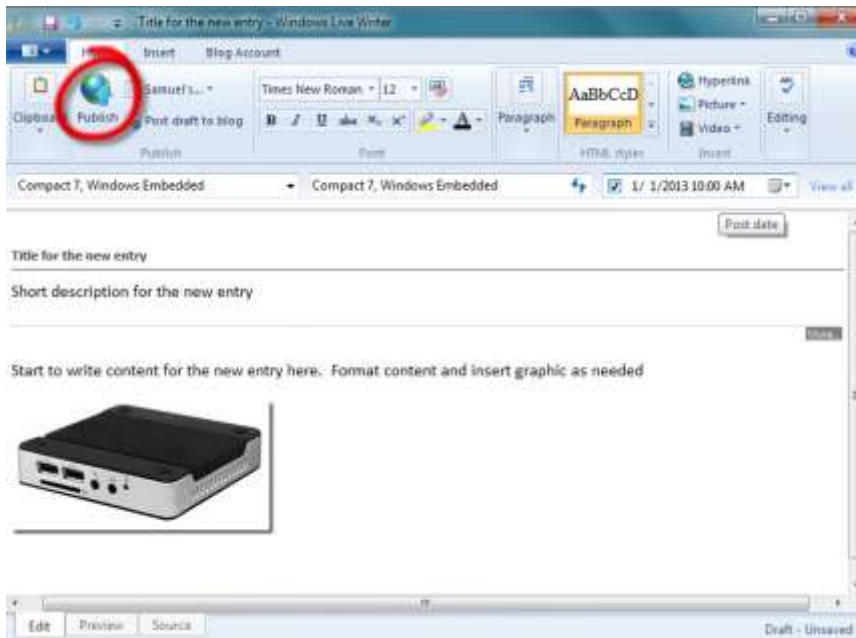


Figure-21

Retrieve & Update Blog Entry

After a blog entry is uploaded to the Embedded101 website, you can retrieve the blog entry to update its content and upload the modified blog entry to the Embedded101 website, to replace the existing entry.

Retrieve Blog Entry from Embedded101 Website

Work through the following steps to retrieve a blog entry from the Embedded101 website.

1. From the WLW menu, select the menu icon and click on Open recent posts, to bring up the recent blog entries selection screen, as shown in Figure-22.

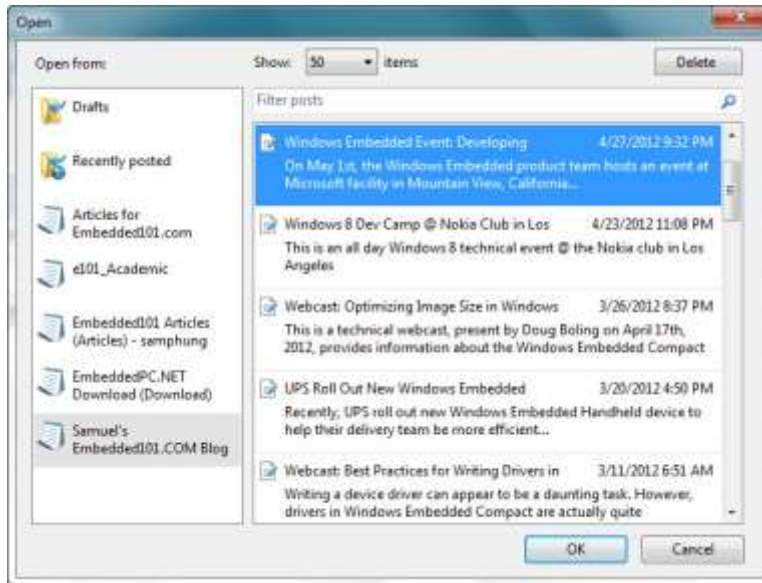


Figure-22

2. On the left pane, select the WLW account configured for the Embedded101 blog. On the right pane, select a blog entry to retrieve and click OK.
3. Once the blog entry is retrieved, you can change the entry's content and click Publish to upload the entry back to the Embedded101 website, replacing the old version with the updated version.

Blog Administration

The blog administration control panel, on the Embedded101 website, provides the facility to manage blog configuration, blog entries and comments.

To keep this user guide short, this guide does not cover all available blog administration features.

To access the blog admin panel, logon to the Embedded101 website and navigate to your blog's main page. From your blog's main page, click on the "Admin Panel" within the Meta group, as shown in Figure-23.



Figure-23

After clicking on the "Admin Panel", you will be redirect to the Blog Admin page to access blog administration functions, as shown in Figure-24.

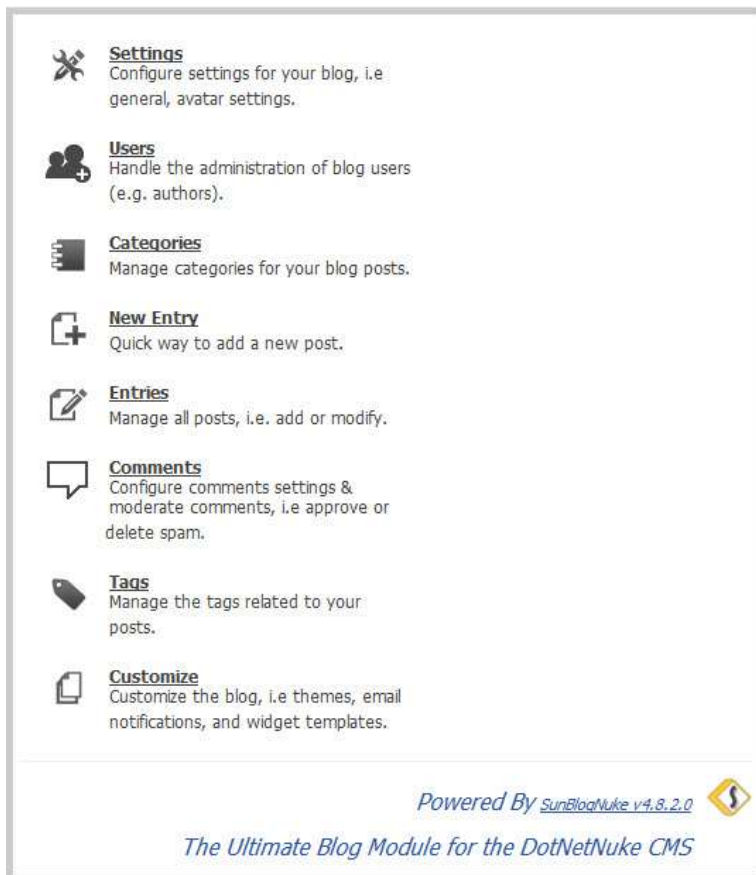


Figure-24

Blog Settings

To customize your blog's behavior, from the Admin panel, click on the "Settings" icon to bring up the blog settings configuration screen. From this screen, you can change the Blog title; enter your email address to receive notification when someone writes a comment on one of your blog entries, and etc...

Manage Blog Entries

To manage existing blog entries, from the admin panel, click on the "Entries" icon to bring up the blog entry admin screen, as shown in Figure-25.

Entry	
Bill Gates' Website-www.thegatesnotes.com Published Views: 43 Last Modified: 5/23/2012 4:55:00 PM By SamuelPhung	Edit Delete
Windows Embedded Event: Developing Specialized Devices for Intelligent Systems Published Views: 149 Last Modified: 4/27/2012 10:27:28 PM By SamuelPhung	Edit Delete
Windows 8 Dev Camp @ Nokia Club in Los Angeles Published Views: 87 Last Modified: 4/23/2012 11:08:13 PM By SamuelPhung	Edit Delete
Webcast: Optimizing Image Size in Windows Embedded Compact 7 Published Views: 157 Last Modified: 4/27/2012 9:34:18 PM By SamuelPhung	Edit Delete
UPS Roll Out New Windows Embedded Handheld Device Published Views: 171 Last Modified: 3/20/2012 4:50:27 PM By SamuelPhung	Edit Delete
Webcast: Best Practices for Writing Drivers in Windows Embedded Compact Published Views: 245 Last Modified: 3/21/2012 12:15:58 AM By SamuelPhung	Edit Delete
SoCal Code Camp at Cal State Fullerton on Jan. 28 and 29 Published Views: 154 Last Modified: 1/19/2012 1:36:48 AM By SamuelPhung	Edit Delete
Webcast: Integrating Gestures in Windows Embedded Compact Published Views: 250 Last Modified: 2/2/2012 5:53:27 PM By SamuelPhung	Edit Delete
Open-Source Myth, Fact and Fiction Published Views: 481 Last Modified: 3/21/2012 12:21:23 AM By SamuelPhung	Edit Delete
Webcast: Porting a Windows Embedded CE 6.0 BSP to Compact 7 Published Views: 331 Last Modified: 3/21/2012 12:18:10 AM By SamuelPhung	Edit Delete
Entry	
1 2 3	

Figure-25

- To delete an entry, click on Delete.
- To edit an entry, click on Edit.

Note: The default settings work well in general.

Settings for Comments

To manage settings for comments to your blog entry, from the admin panel, click on the "Comments" icon to bring up the Comments admin screen, as shown in Figure-26.

General	Avatar	3rd Party Services	Inbox
Allow comments <input checked="" type="checkbox"/> <i>Note that this can be overridden for individual posts.</i>			
Who can comment? <input type="checkbox"/> Registered users <input checked="" type="checkbox"/> Anyone - <i>includes Anonymous Users</i>			
Email me whenever <input checked="" type="checkbox"/> Anyone posts a comment <input type="checkbox"/> A comment needs moderation			
Other comment settings <input checked="" type="checkbox"/> Enable threaded (nested) comments with <input type="text" value="3"/> levels deep (2) <input checked="" type="checkbox"/> Allow registered users to change their details <input checked="" type="checkbox"/> Order comments list from newest to oldest <input type="checkbox"/> Allow trackback comments <input type="checkbox"/> Approval for trackback comments required			
Comments Moderation Configure options about comments moderation, including rules and filters.			
Comment moderation <input type="checkbox"/> Always <input checked="" type="checkbox"/> Never <input type="checkbox"/> Only required for anonymous comments <i>Review comments before they are published.</i>			
Use CAPTCHA for comments? <input checked="" type="checkbox"/> <i>This will help reduce spam and can be replaced with Google reCAPTCHA, which can be activated in the 3rdParty Services Settings. Note that blog authors will not see Captcha for comments.</i>			

Figure-26

In general, the default settings work well for most. Here are important settings to consider:

- **Comment moderation**
 - **Always:** When set to Always, all comment will not be visible to the public until you approved the comment.
 - **Never:** When set to Never, all comment will be visible to the public as soon as it's entered.
 - **Only required for anonymous comments:** When set to this option, only
- **Use CAPTCHA for comments:** This feature should be enabled to reduce machine generated spam to the comments section.

Comments Moderation

To review and moderate comments on your blog, from the Manage Comments screen, click on the Inbox tab, select proper filter and click on Retrieve Comments.